




LAURIER 
WILFRID LAURIER UNIVERSITY

Everywhere you look, people are inspired to learn, lead and leave their mark – to give their all and to give back. From meaningful staff-student relationships, to groundbreaking research projects, to the peer-to-peer support Laurier is famous for, you'll know and feel you belong here.

A photograph of three students sitting on a lawn covered in fallen autumn leaves. A young man in a grey and purple jacket is on the left, looking towards a young woman in the center. She has long brown hair, wears glasses and a white scarf, and is smiling. She is holding a purple can with 'LAURIER' and 'STUDENT MARKS' visible. To her right, another student in a yellow shirt is partially visible. The background shows trees with autumn foliage and a building.

inspired.
together.

A photograph of three young adults sitting on a lawn covered in fallen autumn leaves. On the left, a young man with glasses and a yellow sweatshirt with "LAURIER" printed on it in blue letters is smiling. In the middle, a young woman with glasses and a grey sweater is looking towards the woman on the right. On the right, a young woman with long blonde hair and a beige sweater is looking back towards the woman in the middle. The background is filled with trees with yellow and orange autumn foliage, and the overall lighting is warm and golden.

Laurier's Waterloo and Brantford campuses are on the traditional territory of the Neutral, Anishinaabe and Haudenosaunee Peoples.

Laurier Milton is located on the traditional territory of the Huron-Wendat and Haudenosaunee Peoples.

Acknowledging them reminds us of our important connection to this land where we live, learn and work. We recognize, honour and respect these nations as the traditional stewards of the lands and water on which Laurier is now present.

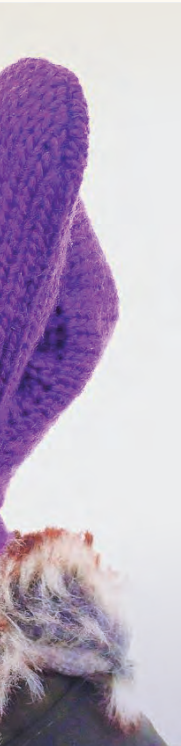
A student experience that **inspires.**



How do you know **you** belong here?

- ▣ You want the education and experience you need to succeed in all aspects of life – that includes a **supportive university community** who will be by your side from your first day to graduation and beyond.
- ▣ You work hard in the classroom but take advantage of hands-on **learning opportunities** to really build your skills – like co-op, volunteering, travel and field trips.
- ▣ You are curious and care about the **different stories and backgrounds** that make us unique, and you see communities as the thread that ties us all together.
- ▣ You know the value of university is greater than a degree and you want to be known in the classroom for your individual knowledge and needs. You sense that **university is the place to explore** your academic, personal and professional potential.





Laurier is a place you'll call home the second your feet hit the Golden Hawk grounds. No matter where you choose to study – Waterloo, Brantford, or Milton – you'll experience the welcoming, **student-focused community** that we're known for. Elevating your personal and academic growth is at the heart of everything we do across all three locations.

WATERLOO

Welcome to Waterloo: a student-friendly city with a thriving tech-sector and plenty of entertainment options year-round. The Waterloo campus spans one large city block, so you're only steps away from your classes, fun ways to unwind and a new favourite study spot.

BRANTFORD

Find yourself in the heart of Brantford. This changemaker campus integrated into the downtown area offers a modern learning environment with a small community feel. Historical buildings have been redesigned to foster personal and engaging academic experiences. Between classes, enjoy the city's arts and culture scene, hike world-class trails and explore the scenic Grand River.

MILTON

Be part of the first undergraduate class of Milton Golden Hawks: Conveniently located just outside the GTA, Milton offers you a comfortable learn-work-live lifestyle. Starting in 2024, Laurier will offer undergraduate degrees in Computer Science and Psychology with small class sizes in this fast-growing, industry-connected town.

» wlu.ca/milton



See what's happening in Milton



Welcome to our

Brantford campus.

As **one tight-knit community**, our Brantford campus thrives on revitalizing the past and innovating for the future.

Fall Open House | NOVEMBER 18, 2023

» wlu.ca/campus/brantford





“Community is more than a buzzword here. We strive to make sure **our students know that they matter and belong.** The friendships and connections you make here **will last you a lifetime.**”

— IVAN JOSEPH, VICE PRESIDENT, STUDENT AFFAIRS, WILFRID LAURIER UNIVERSITY

30 STUDENTS
per class on average.

7 MINUTES
to walk across campus.

240+ PARTNERSHIPS
within the Brantford
community.

WHERE TECHNOLOGY MEETS HUMANITY

Innovative programs like Game Design & Development, Business Technology Management and User Experience Design fill industry gaps before they even arrive, while more traditional programs like English and History stay relevant with hands-on learning and an emphasis on current influencers. Our programs are designed to challenge you to make the world a better place for everyone.

ALL THE AMENITIES

Our newest campus building, One Market, provides a safe, students-only space for you to gather, meet, study and embrace your place in the Laurier community. And within just a few minutes' walk from anywhere on campus, you'll find plenty of fun places to eat, rest and exercise.

A TRANSFORMATIONAL CAMPUS

Laurier's presence in the community has literally transformed the downtown core of the City of Brantford, where post offices are now student residences, movie theatres are lecture halls and banks have become study spaces. How will you make your mark?

Welcome to our

Waterloo campus.

From Canada's fastest growing tech ecosystem to accredited and awarded business, science, arts and music programming - this campus has **something for everyone.**

Fall Open House | NOVEMBER 4, 2023
» wlu.ca/campus/waterloo





TOUR YOUR SCHOOL, YOUR WAY.
EXPLORE OUR CAMPUSES IN PERSON OR
ONLINE. WLU.CA/TOURS



1,570+
technology
companies in
Waterloo Region.

—
10 MINUTES
to walk across
campus.

—
300+ CLUBS
on-and-off-campus.



AN INNOVATIVE NEIGHBOURHOOD

In Waterloo, innovation is all around you. Companies like Google, Vidyar, Shopify and OpenText employ thousands and, alongside hundreds of small businesses, keep downtown Kitchener and uptown Waterloo hopping with fresh ideas and collaborations.

A DIVERSE COMMUNITY

With over 100 nations represented across our campus, and over 220 across the region, you can look forward to a university experience rich in diversity. Plus, get excited for the host of shops and restaurants run by entrepreneurs from around the world, right outside your door.

COUNTLESS OPPORTUNITIES

This city is designed around student life. Your options for housing and food are better every year, and entertainment stays fresh with all varieties of festivals, game cafés and concerts. A brand new light rail transit system makes running errands between classes easier than ever.



Laurier is for the whole family.
From generation to generation, we love
celebrating our successes together.





Right where you belong.

Whether you're carrying on a legacy or creating a new one, welcome to your home away from home.



RESOURCES FOR PARENTS
AND SUPPORTERS AT
[WLU.CA/FAMILIES](https://www.wlu.ca/families)

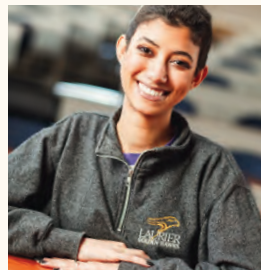
We actively promote inclusivity in all aspects of campus life so you can live with confidence knowing that you **belong at Laurier.**



We use **personalized mental health services and resources** to respond to your unique wellness needs and empower you to support others effectively through peer-to-peer programs.



You can access **physical health services** from health care professionals on campus. Our state-of-the-art fitness and recreational facilities offer individual, group and sport exercise programs.



We're committed to developing a campus community that reflects the diversity of our students. We're doing this in part by hiring more Black and Indigenous professors and counsellors who specialize in **supporting racialized students.**



We take pride in creating **healthy menu items** that fit a wide range of dietary and nutritional needs.



University is a different learning environment with new expectations. Our **Laurier 101 program** and **Accessible Learning teams** help you achieve your goals by providing academic support from before your first day.



» wlu.ca/supports

Supporting your holistic success is at the heart of Laurier. **We know you can only do your best when you're feeling your best**, so we offer resources for every dimension of wellness. Our staff are professional, compassionate and provide respectful personal care.



Taking
care of you.

#1 IN STUDENT-TEACHER INTERACTIONS

GLOBAL STUDENT SATISFACTION AWARDS,
NORTH AMERICA, 2021

50+ OPTIONS & MINORS

to choose from as you
customize your degree.

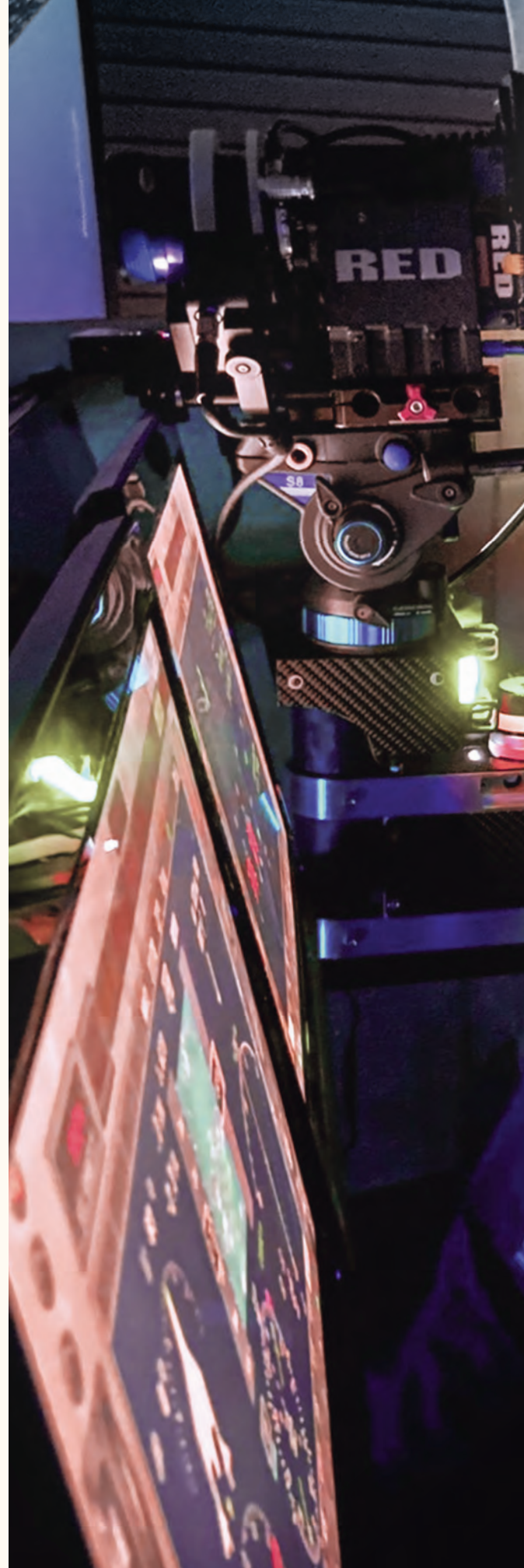
105,000+ LAURIER ALUMNI

living in 100+ countries
around the world.

Leave your mark.

Our students lead lives of influence and impact. Their university education is about building knowledge and experience that serves society, so they can make a lasting difference in their communities and the world around us. Laurier is inspiring the world's future leaders, researchers, business owners, artists and changemakers.

How will I make
a difference?





Sights set on the sky, a career at NASA is within reach.

After completing her double major in Biology and Chemistry in spring 2022 (with a minor in Physics for good measure), Kristin was one step closer to achieving her goal of being the first person on Mars. Kristin was one of 13 undergraduate students from around the world selected to complete an intensive astronautics program through the Advanced PoSSUM Space Academy, where she is currently training in the planetary field geology program to advance our understanding of planetary evolution and extravehicular activities (EVAs).

Her rigorous training paid off - she's awaiting a ship-date for the US Navy flight school to take to the skies as an F-35 fighter pilot. Her sights are still set on NASA - she wants to make her passion for geochemistry and astrobiology into a profession.

Laurier Astronomy professor Ionnis Haranas is a proud supporter of Kristin's interstellar ambitions, having co-authored five research publications with her and encouraging her to apply to the PoSSUM program. Now he watches proudly as his former student takes to the skies, fueled by a desire to **"benefit the future of humankind and help understand our place in the universe."**

— KRISTIN C., BSc '22





“

The Laurier co-op program has been a first-rate experience for Zurich. The students come well prepared to make significant contributions, which is why we have hired many of them back full-time after university.”

— ROBERT THOM, ASSISTANT VICE PRESIDENT,
ZURICH CANADA (TORONTO)



You're curious, creative and driven. You think about the future and what you need to do to succeed. That's why every aspect of your student experience at Laurier helps you to build a meaningful career. **Graduate with hands-on, real-world experience that sets you apart.**

JOB FAIRS

Laurier's job fairs are the largest of their kind in Canada.

99%

EMPLOYMENT RATE for co-op students in 2022/23.

97.1%

OF 2022 GRADUATES secured employment or went on to postgraduate studies.

RESPONDENTS TO THE 2022 LAURIER GRADUATE SURVEY

Our students get hired.

▣ Build your resumé from day 1.

Your student experiences equip you with the **skills employers want**. Capture your practical learning opportunities in your **Laurier Experience Record**, an official and interactive record that you can share with employers. Get resumé, cover letter and networking advice from our Career Centre.



▣ Learn on the job through co-op.

We have **more than 40 undergraduate programs that offer co-op and we have Canada's largest business degree co-op program**. You apply for co-op after first year, unless you're in a double-degree program or Business Technology Management, in which case you're automatically eligible for co-op.

» **View all co-op programs** in the Admissions charts on pages 26–30.

▣ Be a changemaker.

Be part of a community that's finding solutions to the world's social and environmental problems. As an Ashoka U Changemaker Campus, **Laurier is a global leader in social innovation**. Academic options and dedicated spaces will inspire you to use entrepreneurship to transform lives and contribute to a more sustainable world.

Hands-on education comes in so many forms, making it one of the greatest ways to **customize your degree** and leave your own meaningful mark on the world around you. **Experiential learning** also equips you with a career-ready resumé sure to impress – even before you graduate.

Learn by doing.

▣ Paid work experience.

Transform your classroom knowledge into early career success through paid co-op or on-campus jobs at Laurier. Unleash your skills, embrace on-the-job challenges and discover your full potential all while funding your future.

▣ Community and workplace partnerships.

Community Service-Learning opportunities, practicum courses and industry-engaged projects give you a chance to put what you've learned into practice and test the waters before committing to a particular career.

▣ Performances and competitions.

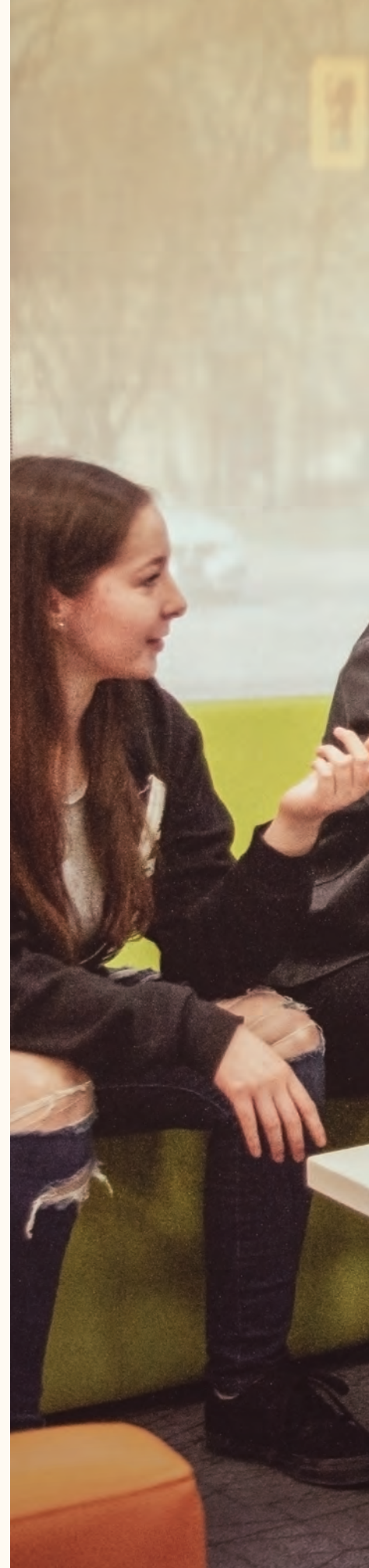
Showcase your creative and career-oriented skills in real-world contexts, whether you're performing a moving concerto or navigating a complicated business case.

▣ International opportunities.

Living and learning in another country can be just the way to take your understanding to a new level. Bring education to life by connecting concepts to the history, values, lifestyle, political and economic landscape of another culture.

▣ Volunteering and giving back.

Choose what matters to you at Laurier by actively contributing to meaningful initiatives, from supporting new immigrants, preserving local habitats or even stocking an on-campus food bank.





**YOUR LAURIER
EXPERIENCE RECORD**

lets you track your hands-on learning so you can set yourself apart when you enter the job market (or apply to grad school). It's the first record of its kind in Canada!

**500+ PARTNER
ORGANIZATIONS**

provide hands-on experiences through Community and Workplace Partnerships.

ATTEND WORKSHOPS

and earn non-credit certificates in everything from money management to career development to working in the non-profit sector.



**Peer projects and
partnerships with faculty**

give Golden Hawks a chance to create and test solutions for challenges facing their campus, community and the surrounding neighbourhoods. These User Experience Design students developed the Nurture Pack as a way for individuals experiencing homelessness to store belongings and convert their pack to a sleeping bag.

At Laurier, we
live and learn as
a community –
inspired together.





RESIDENCE LEARNING COMMUNITIES (RLCs)

Live and learn alongside others in your program or with a common interest.

MIXED GENDER

Single and mixed gender housing options for every identity.

LIVING OFF CAMPUS?

Receive academic, personal and social supports through Laurier Off-Campus University Students (LOCUS).

Welcome home.

Residence is more than a place to eat and sleep. It's also where you'll form lifelong friendships with people who share your commitment to maximizing their university experience.

Our live-in residence staff and upper-year students provide that **extra care and support you're looking for** to help you feel safe, successful and right at home.

wlu.ca/residence

SAMPLE FLOOR PLANS

Sample dormitory-style.



Double

Sample apartment-style.



Single





*Tour your
new room*



Inspire your story.

You can't be summed up by who you are on paper — and neither can your university experience. So go ahead and think outside the box.

Who are you? Who are you becoming? What inspires you?
What impact do you want to have on the world around you?

**Laurier will inspire your story,
so you can inspire others.**



That's what being a **GOLDEN HAWK** is all about.



Find a field that
you love.



We have a program
to get you there.

Choose your path.



Find out where a Laurier degree has taken
recent grads – and where yours could take you!

wlu.ca/programs

YOUR EDUCATION IS YOUR OWN.

Customize your degree with an option, minor, double
major, specialization, concentration, research project,
volunteer leadership role and/or work placement.

Program Admission Requirements

PROGRAM <i>+ Program must be completed in combination with another Bachelor of Arts major.</i>	DEGREE AND CAMPUS	REQUIRED 4U COURSES <i>(in addition to English at 60%)</i>	COMPETITIVE ADMISSION RANGE <i>* Including required courses.</i>	SAMPLE FUTURE CAREERS <i>May require additional study.</i>	CO-OP AND COLLEGE PATHWAY OPTIONS
Ancient Studies <i>Apply to Honours Arts</i>	BA WATERLOO		Low 80s	Arts Administrator Cultural Tour Guide Foreign Service Officer	» CO-OP » PATHWAY
Anthropology⁺ <i>Apply to Honours Arts</i>	BA WATERLOO		Low 80s	Cultural Interpreter Journalist Museum Administrator	» PATHWAY
Applied Health Sciences <i>Option to apply directly to Applied Health Sciences with Teaching Option</i>	BASC BRANTFORD	4U Math at 60% Biology at 60% Chemistry at 60%	High 80s [*]	Epidemiologist Health Educator Public Health Inspector	» PATHWAY
Archaeology & Heritage Studies <i>Apply to Honours Arts</i>	BA WATERLOO		Low 80s	Artefact Analyst Crime Scene Investigator Urban Planner	» CO-OP » PATHWAY
Bachelor of Arts and Master's Degree in English, History or Political Science	BA + MASTER'S WATERLOO	English 4U at 75%	Mid 80s	Archivist Information Scientist Journalist	» PATHWAY
Biochemistry & Biotechnology	BSC WATERLOO	Advanced Functions at 60% Biology at 60% Chemistry at 70%	High 80s [*]	Brewmaster Crime Scene Analyst Toxicologist	» CO-OP » PATHWAY
Biology	BA WATERLOO	Biology at 70%	Mid 80s [*]	Environmental Consultant Genetic Counsellor Naturopath	» CO-OP » PATHWAY
Biology <i>Option to apply for direct entry into Biology & Chemistry or Biology & Psychology</i>	BSC WATERLOO	Advanced Functions at 60% Biology at 70% Chemistry at 60%	High 80s [*]	Dietician Laboratory Technician Pharmacist	» CO-OP » PATHWAY
Biology & Mathematics	BSC WATERLOO	Advanced Functions at 60% Biology at 70% Calculus & Vectors at 60% Chemistry at 60%	High 80s [*]	Bioinformatics Specialist Biotechnologist Public Health Professional	» CO-OP
Business Administration	BBA WATERLOO	Advanced Functions at 70% English at 70% One of Calculus & Vectors or Data Management at 60%	Low 90s [*]	Brand Manager Consultant Entrepreneur	» CO-OP
Business Administration and Computer Science	BBA AND BSC WATERLOO	Advanced Functions at 75% Calculus & Vectors at 75% English at 70%	Low 90s [*]	Cyber Security Specialist Financial Analyst Software Engineer	» CO-OP
Business Administration and Computer Science	BBA (Laurier) AND BCS (University of Waterloo) WATERLOO	Advanced Functions at 90% Calculus & Vectors at 90% English at 80%	Mid 90s [*]	Investment Banking Analyst Policy Analyst Trader	» CO-OP
Business and Financial Mathematics	BBA AND BA WATERLOO	Advanced Functions at 80% Calculus & Vectors at 80% English at 70%	Mid 90s [*]	Tax Accountant Banking Associate Valuation Analyst	» CO-OP
Business and Mathematics	BBA (Laurier) AND BMATH (University of Waterloo) WATERLOO	Advanced Functions at 85% Calculus & Vectors at 85% English at 80%	Mid 90s [*]	Corporate Banker Purchasing Coordinator Actuary	» CO-OP
Business Technology Management	BBTM BRANTFORD	English at 70% One of Advanced Functions or Calculus & Vectors at 70%	High 80s	Enterprise Architect Information Security Analyst Technical Salesperson	» CO-OP » PATHWAY
Chemistry	BSC WATERLOO	Advanced Functions at 60% Chemistry at 70%	High 80s [*]	Analytical Chemist Fragrance Developer Soil Tester	» CO-OP » PATHWAY

Program Admission Requirements

PROGRAM <i>+ Program must be completed in combination with another Bachelor of Arts major.</i>	DEGREE AND CAMPUS	REQUIRED 4U COURSES <i>(in addition to English at 60%)</i>	COMPETITIVE ADMISSION RANGE <i>* Including required courses.</i>	SAMPLE FUTURE CAREERS <i>May require additional study.</i>	CO-OP AND COLLEGE PATHWAY OPTIONS <i>*Only offered in Waterloo</i>
Chemistry & Mathematics	BSC WATERLOO	Advanced Functions at 60% Calculus & Vectors at 60% Chemistry at 70%	Low 90s*	Chemical Specialist Industrial QC Expert Technical Science Writer	» CO-OP
Chemistry & Physics	BSC WATERLOO	Advanced Functions at 75% Calculus & Vectors at 75% Chemistry at 75%	Low 90s*	Health and Safety Officer Product Developer Special Effects Developer	» CO-OP
Christian Studies & Global Citizenship	BA WATERLOO		High 80s	Activist Missionary Refugee Resettlement Worker	» PATHWAY
Communication Studies	BA WATERLOO		Low 80s	Corporate Communications Media Analyst Public Relations Director	» CO-OP » PATHWAY
Community Music	BMus WATERLOO	Audition, theory and ear-training test, interview and reference letter. <i>Optional portfolio submission.</i>	High 80s <i>Minimum 75% required.</i>	Community Music Facilitator Cultural Event Planner Music School Director	» PATHWAY
Computer Science⁺	BA WATERLOO BRANTFORD or MILTON	Advanced Functions at 60%	Mid 80s*	Account Manager Computer Security Specialist Network Administrator	
Computer Science	BSC WATERLOO or MILTON	Advanced Functions at 60% One of Calculus, Chemistry or Physics at 60%	Mid 80s*	QA Specialist Systems Engineer Web Administrator	» CO-OP* » PATHWAY*
Computer Science & Physics	BSC WATERLOO	Advanced Functions at 60% Two of Calculus & Vectors, Chemistry or Physics at 60%	Mid 80s*	Database Administrator Software Engineer Web Designer	» CO-OP
Computer Science & Psychology	BSC WATERLOO	Advanced Functions at 60% One of Biology, Calculus & Vectors, Chemistry or Physics at 60%	Mid 80s*	Business Systems Analyst Chief Information Officer Video Game Developer	» CO-OP
Criminology	BA BRANTFORD		Low 80s	Child Protection Worker Fraud Investigator Mediator	» PATHWAY
Cultural Studies⁺ <i>Apply to Honours Arts</i>	BA WATERLOO		Low 80s	Community Manager Cultural Heritage Conservator Tourism Coordinator	» PATHWAY
Data Science	BSC WATERLOO	Advanced Functions at 80% Calculus & Vectors at 80% English at 70%	High 80s*	Big Data Architect Catastrophe Risk Analyst Venture Capital Associate	» CO-OP
Economics <i>Option to apply for direct entry into Economics & Accounting, Economics & Data Analytics or Economics & Financial Management</i>	BA WATERLOO	Advanced Functions at 70% English at 70% One of Calculus & Vectors or Data Management at 60%	High 80s*	Business Forecaster Insurance Broker Sports Statistician	» CO-OP
English <i>Option to apply directly to English with Teaching Option</i>	BA BRANTFORD		Mid 80s	Librarian Playwright Radio Producer	» PATHWAY
English <i>Apply to Honours Arts</i>	BA WATERLOO		Low 80s	Advertising Agent Copywriter Literacy Group Coordinator	» CO-OP » PATHWAY

PROGRAM <i>+ Program must be completed in combination with another Bachelor of Arts major.</i>	DEGREE AND CAMPUS	REQUIRED 4U COURSES <i>(in addition to English at 60%)</i>	COMPETITIVE ADMISSION RANGE <i>*Including required courses.</i>	SAMPLE FUTURE CAREERS <i>May require additional study.</i>	CO-OP AND COLLEGE PATHWAY OPTIONS
Environmental Science	BSC WATERLOO	Advanced Functions at 60% Biology at 70% Chemistry at 60%	Mid 80s*	Agricultural Consultant Landscape Planner Meteorologist	» CO-OP
Environmental Studies	BA WATERLOO		Low 80s*	Chief Ecologist Conservation Specialist Sustainability Officer	» CO-OP » PATHWAY
Film Studies <i>Apply to Honours Arts</i>	BA WATERLOO		Low 80s	Film Archivist Screenwriter Trade Show Supervisor	» CO-OP » PATHWAY
Financial Mathematics	BA WATERLOO	Advanced Functions at 75% Calculus & Vectors at 75%	High 80s*	Hedge Fund Manager Inventory Manager Sell-Side Equity Analyst	» CO-OP
Financial Mathematics	BSC WATERLOO	Advanced Functions at 75% Calculus & Vectors at 75% One of Biology, Chemistry or Physics at 60%	Low 90s*	Bank Examiner Finance Underwriter Mutual Fund Manager	» CO-OP
French <i>Apply to Honours Arts</i>	BA WATERLOO		Low 80s	Dialect Coach Flight Attendant Immigration Officer	» CO-OP » PATHWAY
Game Design & Development <i>Option to apply directly to Game Design and Development with Teaching Option or Game Design and Development in Combination</i>	BA BRANTFORD	English at 70%	Low 80s	Application Designer Gamification Developer User Interface Developer	» PATHWAY
Game Design & Development and Computer Science	BA BRANTFORD	Advanced Functions at 60%, English at 70%	Low 80s	Video Game Developer Gamification Developer Software Engineer	» CO-OP
Geography <i>Option to apply for direct entry into Geography and Archaeology & Heritage Studies, Geography & Geomatics or Geography with an Environmental Science Option.</i>	BSC WATERLOO	Advanced Functions at 60% Two of Biology, Chemistry or Physics at 60%	Mid 80s*	Cartographer Natural Resource Officer Surveyor	» CO-OP
Global Studies <i>Apply to Honours Arts</i>	BA WATERLOO		Low 80s	International Development Professional Negotiator Social Entrepreneurship	» CO-OP » PATHWAY
Health Management	BA BRANTFORD		Low 80s	Disability Claims Manager Hospice Director Wellness Coordinator	» PATHWAY
Health Sciences	BSC WATERLOO	Advanced Functions at 60% Biology at 60% Chemistry at 60%	Low 90s*	Audiologist Midwife Occupational Therapist	» CO-OP
Health Studies	BA BRANTFORD		Low 80s	Addictions Counsellor Corporate Wellness Specialist Pharmaceutical Sales Agent	» PATHWAY
History <i>Option to apply directly to History with Teaching Option</i>	BA BRANTFORD		Low 80s	Curriculum Assistant Lawyer Project Coordinator	» PATHWAY
History <i>Apply to Honours Arts</i>	BA WATERLOO		Low 80s	Acquisitions Editor Curator Training Specialist	» CO-OP » PATHWAY
Honours Science	BSC WATERLOO	Advanced Functions at 60% Biology at 60% Chemistry at 60%	High 80s*	Health Professional Industrial Hygienist Technician	» CO-OP

Program Admission Requirements

PROGRAM <i>+ Program must be completed in combination with another Bachelor of Arts major.</i>	DEGREE AND CAMPUS	REQUIRED 4U COURSES <i>(in addition to English at 60%)</i>	COMPETITIVE ADMISSION RANGE <i>*Including required courses.</i>	SAMPLE FUTURE CAREERS <i>May require additional study.</i>	CO-OP AND COLLEGE PATHWAY OPTIONS
Human Rights	BA BRANTFORD		Low 80s	Diversity and Equity Officer Grant Writer Immigrant Settlement Worker	» PATHWAY
Indigenous Studies⁺ <i>Option to apply directly to Indigenous Studies with Teaching Option</i>	BA BRANTFORD		Low 80s	Community-Industry Liaison Cultural Resources Manager Political Aid	» PATHWAY
International Education Studies	BA WATERLOO	English at 70%	Low 80s	ESL Teacher Global Engagement Manager International School Teacher	» PATHWAY
Kinesiology	BKIN WATERLOO	Biology at 70% One 3M, 3U or 4U Math at 60% <i>Biology and English required in admission average.</i>	High 80s ⁺	Coach Paramedic Sports Marketer	» CO-OP
Languages and Literatures <i>Apply to Honours Arts</i>	BA WATERLOO		Low 80s	Communications Specialist Linguist Speech-language Pathologist	» CO-OP » PATHWAY
Law Degree and Arts Degree in Criminology, English, History, Human Rights or Law and Society	BA (Laurier) AND LLB (University of Sussex) BRANTFORD	English at 70%	High 80s	CSR Manager Legal Writer Policy Advisor	
Law Degree and Arts Degree in English, History, Film Studies, Philosophy or Political Science	BA (Laurier) AND LLB (University of Sussex) WATERLOO	English at 70%	High 80s	Intelligence Agent Legal Editor Public Opinion Analyst	
Law Degree and Science Degree in Honours Science	BSC (Laurier) AND LLB (University of Sussex) WATERLOO	Advanced Functions at 60% Biology at 60% Chemistry at 60% English at 70%	Low 90s ⁺	Claims Adjudicator Humanitarian Aid Worker Legal Expert	
Law & Society	BA BRANTFORD		Low 80s	Correctional Officer Human Rights Advocate Paralegal	» PATHWAY
Mathematics	BA WATERLOO	Advanced Functions at 60% Calculus & Vectors at 60%	Mid 80s ⁺	Cryptologist Financial Analyst Investment Banking Associate	» CO-OP
Mathematics <i>Option to apply for direct entry into Mathematics & Computer Science</i>	BSc WATERLOO	Advanced Functions at 60% Calculus & Vectors at 60% One of Biology, Chemistry or Physics at 60%	High 80s ⁺	Market Research Analyst Public Health Statistician Technical Writer	» CO-OP
Medieval & Medievalism Studies⁺ <i>Apply to Honours Arts</i>	BA WATERLOO		Low 80s	Antiques Dealer/Appraiser Museum Administrator Prop/Costume Designer	» PATHWAY
Music	BMus WATERLOO	Audition, theory and ear-training test, interview and reference letter. <i>Optional portfolio submission.</i>	Low 90s <i>Minimum 75% required.</i>	Game/Film Music Composer Music Business Lawyer Professional Musician	» PATHWAY
Music Therapy <i>Must be enrolled in another Laurier music program. Apply in second year.</i>	BMT WATERLOO	High standing in music and psychology courses; strong interpersonal skills; interview and audition.		Private Music Therapist Psychotherapist Social Worker	
North American Studies⁺ <i>Apply to Honours Arts</i>	BA WATERLOO		Low 80s	Cultural Affairs Officer Media Researcher Political Correspondent	» PATHWAY

PROGRAM <i>+ Program must be completed in combination with another Bachelor of Arts major.</i>	DEGREE AND CAMPUS	REQUIRED 4U COURSES <i>(in addition to English at 60%)</i>	COMPETITIVE ADMISSION RANGE <i>*Including required courses.</i>	SAMPLE FUTURE CAREERS <i>May require additional study.</i>	CO-OP AND COLLEGE PATHWAY OPTIONS <i>*Only offered in Waterloo</i>
Philosophy <i>Apply to Honours Arts</i>	BA WATERLOO		Low 80s	Embassy Worker Ethical Consultant Public Relations Specialist	» CO-OP » PATHWAY
Policing⁺	BA ONLINE (Policing) <i>plus BRANTFORD or WATERLOO (combination major)</i>		Low 80s	Court Clerk Crime Reporter Law Enforcement/Security	» PATHWAY
Policing & Psychology	BA ONLINE (Policing) <i>plus BRANTFORD or WATERLOO (Psychology)</i>	One 3M, 3U or 4U Math at 60% <i>English required in admission average.</i>	High 70s ⁺	Community Agency Director Law Enforcement Victims Advocate	» PATHWAY
Political Science <i>Apply to Honours Arts</i>	BA WATERLOO		Low 80s	International Aid Worker Legislative Assistant Political Strategist	» CO-OP » PATHWAY
Psychology <i>Option to apply for direct entry into Forensic Psychology or Psychology with Teaching Option</i>	BA BRANTFORD	One 3M, 3U or 4U Math at 60% <i>English required in admission average.</i>	Mid 80s ⁺	Child/Youth Worker Forensic Psychologist Social Policy Researcher	» PATHWAY
Psychology	BA WATERLOO or MILTON <i>(combination major option)</i>	One 3M, 3U or 4U Math at 60% <i>English required in admission average.</i>	Mid 80s ⁺	Agency Director Child Life Specialist Probation Officer	» CO-OP ⁺ » PATHWAY ⁺
Psychology <i>Option to apply for direct entry into Psychology & Neuroscience in Waterloo</i>	BSC BRANTFORD or WATERLOO	Advanced Functions at 60% Biology at 60%	High 80s ⁺	Bereavement Counsellor Psychometrist Recreational Therapist	» CO-OP ⁺
Religion & Culture <i>Apply to Honours Arts</i>	BA WATERLOO or ONLINE		Low 80s	Denominational Executive Filmmaker Social Services Director	» CO-OP » PATHWAY
Social Work <i>Option to apply directly to Social Work with Teaching Option</i>	BSW BRANTFORD		Mid 80s	Disaster Relief Worker Mental Health Counsellor Support Group Facilitator	» PATHWAY
Sociology <i>Apply to Honours Arts</i>	BA WATERLOO		Low 80s	Career Counsellor Marriage Therapist Student Life Coordinator	» CO-OP » PATHWAY
Spanish⁺ <i>Apply to Honours Arts</i>	BA WATERLOO		Low 80s	Import/Export Trader Interpreter Film Translator	» CO-OP » PATHWAY
User Experience Design	BDes BRANTFORD	English at 70%	Mid 80s	Accessibility Specialist Information Architect Web Content Designer	» CO-OP » PATHWAY
Women & Gender Studies⁺ <i>Apply to Honours Arts</i>	BA WATERLOO		Low 80s	Discrimination Investigator Paralegal Women's Centre Organizer	» PATHWAY
Youth & Children's Studies <i>Option to apply directly to Youth and Children's Studies with Teaching Option</i>	BA BRANTFORD		Low 80s	Camp Director Early Childhood Educator Youth Parole Officer	» PATHWAY

Getting a university education is an investment in your future.

We want to invest in you along the way. At Laurier, we take financial health seriously, not only by providing a wide variety of funding opportunities for you throughout your degree, but also by equipping you with the skills to manage your own finances effectively in the years to come.

Tuition and finances.

How to calculate your expenses.

These are the estimated expenses for two terms. To come up with a realistic estimate based on your own lifestyle, research housing, food and tuition expenses at wlu.ca/tuition.

ACADEMIC EXPENSES	
Tuition*	\$6,744–\$9,999
Student Fees	\$1,924–\$3,675
Textbooks and Supplies	\$1,500
Subtotal	\$10,168–\$15,174
PERSONAL EXPENSES	
<i>Residence</i>	
Waterloo Campus	\$7,333–\$10,330
Brantford Campus	\$7,943–\$8,514
<i>Meal Plans and Food</i>	
Waterloo Campus	\$2,571–\$6,796
Brantford Campus	\$910–\$1,290
Food	\$3,300
Other (phone, clothing, etc.)	\$3,200
Subtotal	\$15,353–\$23,626
Total	\$25,521–\$38,800

- * Domestic tuition estimates for 2023–24. International tuition fees are \$32,251–\$40,210. Domestic tuition fees for double-degree programs with the University of Waterloo are \$12,872 for BBA and BCS. Double-degree international tuition fees are \$55,700 for BBA and BMath and \$66,518 for BBA and BCS.
- All amounts are based on estimates for the 2023–24 academic year and are subject to increase for 2024–25.
- Fees include mandatory supplementary health and dental plan.
- Meal plan pricing is for the year and includes a dining hall levy for Waterloo plans of \$10 per term for apartment-style plans and \$25 per term for all-access plans.

Financial wellness supports.

MONEY MANAGEMENT PROGRAM

Dollars & Sense is a financial literacy program that teaches you how to manage your finances and achieve your financial goals. Gain essential knowledge on budgeting, responsible credit use, informed investing and financial planning. You can earn a Money Management Certificate remotely by completing a series of online workshops.

ONE-ON-ONE FINANCIAL COACHING

Meet with our financial literacy specialist to create a personalized financial plan and talk you through your current budget. Regular review of your budget will help you achieve your financial goals.

EMPLOYMENT OPPORTUNITIES

You can apply to part-time and summer employment opportunities on and off campus. And the Laurier Work-Study Program provides a number of on-campus jobs to students with financial need.

EMERGENCY FUNDING

Students can access emergency counselling and financial support through the Dean of Students' offices.



**ARE YOU AN
INTERNATIONAL
STUDENT?
CALCULATE YOUR
TUITION**



Our investment in you.

We have several **funding opportunities** available for your first year at Laurier and beyond.

ENTRANCE SCHOLARSHIPS

You are automatically assessed for renewable entrance scholarships, and they are awarded based on your final high school admissions average and your Laurier GPA. *No application required.*

» See wlu.ca/scholarships for eligibility requirements.

DOMESTIC STUDENTS

ADMISSION AVERAGE	AWARD
95.0–100%*	\$4,000
90.0–94.9%	\$3,000
85.0–89.9%	\$2,500

INTERNATIONAL STUDENTS

ADMISSION AVERAGE	AWARD
95.0–100%*	\$6,000
90.0–94.9%	\$5,000
85.0–89.9%	\$3,000
80.0–84.9%	\$1,500

Note: Scholarship values are subject to change. Bachelor of Business Administration (BBA) and BBA double-degree students are eligible for entrance scholarships with an admission average of 90% and higher.

*This entrance scholarship is the President's Gold Scholarship.

IN-COURSE SCHOLARSHIPS

GRADE POINT AVERAGE	AWARD
11.0–12.0*	\$1,500
10.5–10.99**	\$1,250

*This is equivalent to 85.0–100%.

**This is equivalent to 82.5–84.99%.

PRESIDENT'S GOLD SCHOLARSHIP

If your average is 95% or higher, you will receive \$4,000 (domestic students) or \$6,000 (international students) in your first year at Laurier. This scholarship is renewable each year of your degree (up to five years for some programs) if you meet eligibility requirements.

LAURIER SCHOLARS AWARD

The prestigious Laurier Scholars Award is an annual entrance scholarship that offers high-achieving students the opportunity to participate in a dynamic learning environment that will foster innovative thinking and ethical, visionary leadership. This award is valued at \$40,000* over the course of four years.

Application required.

*This amount is based on 2022-23 and is subject to change for 2023-24.

ENTRANCE BURSARIES

Up to \$1,500 (based on financial need) for students attending postsecondary for the first time.

Application required.

LAURIER TUITION BURSARY

A bursary for upper-year students and transfer students based on financial need. *Application required.*

COMPETITIVE SCHOLARSHIPS AND AWARDS

There are 650+ awards given annually based on interests, extracurriculars, financial need and academic achievement. *Applications open in June.*

IVAN JOSEPH SENIOR STUDENT SCHOLARSHIP

The prestigious Ivan Joseph Senior Student Scholarship is a renewable entrance scholarship created to support outstanding Afro-Caribbean or of Afro-Caribbean-decent students. Inaugural recipients of this award will benefit from \$5,000 per year for four years, dedicated mentorship and peer-to-peer community through the Afro-Caribbean Student Success Program.

Applications open in December.

We want you to join our community.

Applications are facilitated online through the Ontario Universities' Application Centre (OUAC). After you apply, you'll receive a confirmation email with your next steps. We'll keep you informed along your whole applicant journey.

Admissions.



ENGLISH-PROFICIENCY REQUIREMENT

You must show evidence of your English proficiency if you have not studied in an English-language school for at least three years. Submit an English-language test score after you apply to Laurier.

If you do not meet the English-proficiency requirement, you may receive an offer of admission with a condition to provide evidence of your English proficiency.

» wlu.ca/english-proficiency

APPLICANT BACKGROUND SUMMARY (ABS) FORM

If your average is below the minimum requirement for your program, your extracurricular information could help you gain admission. » wlu.ca/abs

TRANSCRIPTS AND SUPPORTING DOCUMENTS

We communicate any documents we may need to review your application after you apply, which could include evidence of your English proficiency. Supporting documents are submitted online.

INDIGENOUS APPLICANTS

We are committed to fostering a positive experience for all Indigenous applicants and students. Connect with our Indigenous student recruitment team to discuss admission policies, funding and our programs. » wlu.ca/indigenous



NON-ONTARIO APPLICANTS

Specific admissions information for all applicant backgrounds is posted on our website, including IB and AP curriculums, Canadian curriculums and international student requirements.

» wlu.ca/admissions

NON-HIGH SCHOOL APPLICANTS

Specific admissions information for mature students or applicants without a completed high school diploma is available on our website.

» wlu.ca/admissions

If you are applying to Laurier with one or more years of studies completed at another college or university, you can find information on admissions, transfer credits, pathways and your transition to Laurier on our transfer student website. » wlu.ca/transfer

Application checklist



September to December

Get to know Laurier. Research us online and explore our campuses.



December to June

Admission decisions are made on an ongoing basis. Evaluate your choices and make a decision.



JANUARY 15

Application deadline for Ontario high school students.



APRIL 1

Application deadline for all other students.



APRIL 25

Last day to submit the Applicant Background Summary form.



MAY 29

Last day Ontario high school students will hear back about their applications.



JUNE 3

Deadline to accept your offer.



June to September

Participate in **Laurier 101**, a support program that prepares you for university.

WATERLOO

75 University Avenue West
Waterloo, Ontario
Canada N2L 3C5

BRANTFORD

73 George Street
Brantford, Ontario
Canada N3T 2Y3

MILTON

555 Industrial Drive
Milton, Ontario
Canada L9T 5E1



Contact us:

chooselaurier@wlu.ca
548.889.8888

LEARN MORE.
wlu.ca



Printed on Rolland Enviro Print. This paper contains 100% post-consumer fiber, is manufactured using renewable energy - Biogas and processed chlorine free. It is FSC® and Ancient Forest Friendly™ certified.

Laurier's commitment to sustainability has earned us recognition as one of Canada's Greenest Employers for the past four years (Mediacorp Canada Inc.).